



## REFERENCES - VARIOUS



### THE O2, LONDON, UK

A Big Hanna Composter model T240, with bin lift, installed 2007 at this spectacular building which was constructed to celebrate the new millennium.



### MOD WORTHY DOWN CAMP, UK

This Ministry of Defense training kitchen for future military chefs produces a lot of food. It takes two model T240 (nicknamed Bill and Ben) to process this waste. At this site IMC's macerator and dewatering equipment is used in order to reduce the water content of the food waste before it is put into the machines.



### KEW BOTANICAL GARDEN WAKEHURST PLACE, UK

A Big Hanna model T60 installed at this amazing botanical garden. Kew is at the forefront of saving plant life worldwide and thereby helping to tackle climate change.



### ST MARY'S, ISLE OF SCILLY, UK

A Big Hanna Composter model T240 - installed 2006, taking care of the food waste from some of the hotels on St Mary's.



### MEADOWS SHOPPING CENTRE, CHELMSFORD, UK

A Big Hanna Composter Model T120 installed at a shopping centre northeast of London. Meadows target is "We intend to achieve net zero carbon status by 2016."



**ALEtrumman**<sup>®</sup>  
komposten



**BIGHANNA**<sup>®</sup>  
composter

## REFERENCES - VARIOUS



### SWEDISH SPACE CORPORATION, ESRANGE, SWEDEN

Composts with a model T120 since 2006. The operation has grown and when they needed additional capacity another T120 was bought in 2011. This site is used for launching weather balloons as well as rockets.



### GÖTEBORGS KYRKLIGA STATSMISSION, ERGON ARBETSTRÄNING, GÖTEBORG, SWEDEN

Big Hanna Composter model T40 composts at the 'City Mission'. This section offers job training and rehabilitation in industry and crafts for people on long term sick leave or with disabilities.



### PAYS DE LA HAUTE SARHE, BEAUMONT SUR SARTHE, FRANCE

Big Hanna Composter model T240 at a recycling centre in Beaumont sur Sarthe composts the food waste from the local school and hospital.



### SAQ, QUEBEC, CANADA

The Société des alcools du Québec (SAQ) is a state-owned corporation responsible for the trade of alcoholic beverages. The food waste from one of their canteens is composted in a model T60, installed 2010.



### CAMP VICTORIA, KOSOVO

Four Big Hanna Composters model T120 of the old green variety is composting mostly vegetable waste from the biggest kitchen since 2000. The compost is distributed to local farmers.



### HONDA TAYO CO. LTD, OOITA PREFECTURE, JAPAN

Big Hanna Composter model T60 installed in a specially designed typhoon secure house at Honda Tayo.



### LES TERRES AUSTRALES ET ANTARCTIQUES FRANÇAISES, KERUGUELEN

Big Hanna Composter model T120 installed at a research centre on the island of Kerguelen. Kerguelen is located southeast of South Africa, in the 'Roaring Forties'.



### FOOD PROCESSING FACTORY, YAMANASHI, JAPAN

Big Hanna Composter model T120 installed outside a small food processing plant. The machine is working despite the snow cover! The temperature inside the cylinder is 60°C.

**ALEtrumman®**  
komposten



**BIGHANNA™**  
composter

## REFERENCES - VARIOUS

### THE EDEN PROJECT, CORNWALL, ENGLAND

This Neter30 (a larger and tailor made compost machine from the same family as Big Hanna Composters) was supplied by Susteco AB to Eden Project in 2005.

The composter has, besides the same functions as a Big Hanna, a bin lift for larger bins, a conveyor belt where the food waste is inspected, a shredder for larger volumes, 20 temperature sensors and of course a much larger cylinder. The flow through composting principle is the same as Big Hannas. The Eden Project composts the food waste from its restaurants and is also processing some green waste. The biological process in this machine takes 80 days and the temperature is often much more than 60°C.

The end product is very high in nutrients and is mixed with soil or used as compost. Nicolette Knight, Waste Operations Manager at Eden, said: "The whole composting process is a great educational tool for visitors, because they see the journey of their food from the plate through to the plant. It starts as they sort waste from their trays into different containers, and ends as they pass the composting plant which has been deliberately sited near one of the public car parks. It's Eden's version of alchemy."

[Read more about 'Waste Neutral' at Eden Project.](#)

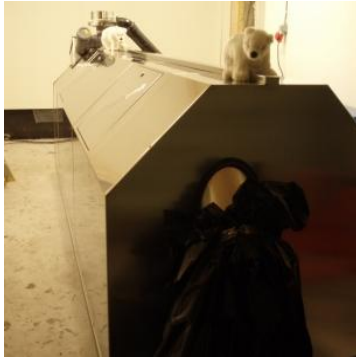


**ALEtrumman**<sup>®</sup>  
komposten



**BIGHANNA**<sup>™</sup>  
composter

## REFERENCES - VARIOUS



### KINGSBAY AS, NY-ÅLESUND, SVAALBARD

Big Hanna Composter Model T120 - installed at the research centre (research on climate change as well as other areas) 1200 km from the northpole. This machine is used by the station as well as by the rest of the village. The goal is to landfill nothing on Svaalbard so they sort their waste in 25 different fractions and the material that cannot be used is transported back to the mainland. In winter the polar bears often come and visit the village. Big Hanna plays an important part composting the food waste so that the bears wont be tempted eat it.



**ALEtrumman**<sup>®</sup>  
komposten



**BIGHANNA**<sup>™</sup>  
composter

## REFERENCES - VARIOUS



### THE MINISTRY OF NATURAL RESOURCES (MNR), THUNDER BAY, ONTARIO CANADA

The first Big Hanna mobile composting unit was installed in Thunder Bay Ontario for the Ministry of Natural Resources Fire Rangers. The composter model T60 is mounted on a trailer that follows to fire ranger's forest camps.



The Big Hanna composter is receiving all the food waste of the fire ranger's camp and allows composting locally the food waste instead of hauling the garbage back to landfill.



It's a wonderful accomplishment in the green waste treatment plan established by the Ministry of Natural Resources of Ontario Canada.



In the winter season when there are not that many fires the Big Hanna is going to be used by the prison in Thunder Bay. The prison is self-sufficient in vegetables and the prisoners work in the greenhouses.



The top two pictures on the right hand side are from MNR's website.

